

M1™ Edge PoE LiDAR Sensor

With QORTEX Aware™

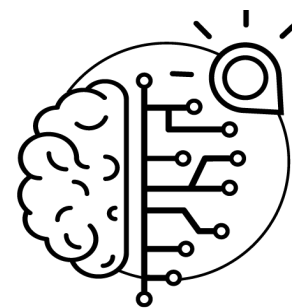
M1 Edge PoE is a complete, out-of-the-box solution that combines smart object detection software with Quanergy's M-Series LiDAR sensors to enable smart awareness for applications that require simple object detection and alerting capabilities. With M1 Edge PoE, customers can quickly and easily set up a LiDAR sensor, collect, and make use of the LiDAR point cloud data without additional development effort required.



QORTEX Aware™, Object Detection Software

QORTEX Aware™ is a core proprietary detection software from Quanergy which enables quick and flexible deployment of LiDAR technology in a wide variety of uses cases and markets. With QORTEX Aware™ integrated on-board, the M1 Edge PoE can monitor user defined detection zones and triggers an alarm through the Ethernet interface if there is any activity within the zones. Users can create up to 8 pre-configured evaluation fields, each with up to 128 detection zones, where the evaluation field is selected via the sensor's Ethernet API.

- Complete hardware and software integration saves development costs
- Out-of-the-box solution for quick deployments in a wide variety of applications
- Flexible configuration to support a variety of use cases



Key Applications

M1 Edge PoE is ideal for stationary and dynamic applications that require simple alerting when an object enters a monitored area. Key markets for M1 Edge PoE include:

- **Safety/Security:** Easily monitor restricted areas with Quanergy's M1 Edge PoE solution. Intruders entering protected areas are flagged, triggering an alarm alerting security personnel about the breach.
- **Warehouse/Logistics:** QORTEX Aware™ is perfect for easy setup of bin picking applications. Get confirmation of correct pick and alarm for incorrect pick. Simple to change bin pattern as needed. Or it can be used for Loading Dock monitoring, giving up to date status of open loading docks.
- **Industrial:** QORTEX Aware™ is an ideal solution for level and height sensing applications, including tank level monitoring, object stacking, fill level detection, and more.

Product Features

- Accurate object detection
- Up to 8 evaluation fields, dynamically selectable over Ethernet
 - Up to 128 configurable detection zones within each evaluation field
 - Easy and flexible setup and configurations of alert zones
- Power-over-Ethernet (PoE) connection

SPECIFICATIONS

ME1-100AW-PoE

ME1-150AW-PoE

ME1-200AW-PoE

Applications	Safety/security, object detection in robotics and industrial automation		
Embedded Software	QORTEX Aware™		
Number of Programmable Evaluation Fields	8		
Number of Detection Zones per Field	128		
Laser Class	Class I (Eye Safe, IEC 60825-1)		
Wavelength	905nm		
Measurement Technique	Time of Flight (ToF)		
Minimum Range	0.6m		
Maximum Range	100m (80% reflectivity) 35m (10% reflectivity)	150m (80% ref.) 53m (10% ref.)	200m (80% ref.) 70m (10% ref.)
Range Accuracy (1 σ at 50m)	<3cm		
Frame Rate (Update Frequency)	5-20Hz		
Angular Resolution	0.033°-0.132° dependent on frame rate		
Detection Layers	1		
Field of View (FOV)	Horizontal: 360°		
Data Outputs	Angle, Distance, Intensity, Time Stamp (synchronized to GPS when available)		
Output Connection	RJ45 802.3at (PoE+)		
Returns/Echoes	1 or 3		
Output Rate	54,500 points per second (1 return), 163,500 points per second (3 returns)		
Ambient Light Immunity	80,000 lux		
Nominal/Peak Power	18W/24W @ 24V		
Operating Voltage	42.5-57VDC		
Operating Temperature	-20°C to +60°C (-4°F to +140°F)		
Storage Temperature	-40°C to +105°C (-40°F to +220°F)		
Nominal Weight	1360g		
Dimensions	115mm (D) x 134mm (H)		
Shock & Vibration	ETSI EN 300 019-2-5, IEC Class 5M3		
Environmental Protection	IP67		
Certifications & Compliance	FDA, FCC, CE, RoHS, WEEE, IEC-60079-15, ASTM G154-12A, EN-61326, IEC-61010, ISO 9001:2015, REACH SVHC, Conflict Mineral Rules		
Warranty			

*Specifications are subject to change without notice